

# miniHUB-1RU-2-1 Technical Specification

miniHUB-1RU-2-1 modular frame for 2 card modules and 1 CWDM-8 mux

## Data Sheet



### Description

miniHUB-1RU-2-1 is a quarter width 1 rack unit frame that will hold up to 2 cards and 1 CWDM-8 mux. The miniHUB frame supports the RCONmini MkII (Frame Controller) which provides all external data control and referencing to the cards within. One power module is included in the frame purchase and there are facilities for a second supply to be connected if redundancy is an issue.

The miniHUB platform is a high end system that will withstand rigorous environments. Features such as “Click & Go” card locking system is standard and provides operational continuity in harsh conditions.

It can be used for any fiber transport needs within the broadcast environment. See [www.norwia.no](http://www.norwia.no) for more info.

### Features

- Dual redundant power supply
- Flexible power solution with mixed battery and AC supply
- Frame controller with Ethernet based WEB and SNMP
- Many configuration options with Norwia miniHUB card modules
- Compact size makes it suitable for small setups with powerfull link capabilities
- Can typically house up to 8 x Video or 4 x Video + 1 x Ethernet and other miniHUB combinations
- Built-in test and monitoring software
- Hot swappable card modules and SFP's

### Part Number Options

Part Number	Temperature *)
miniHUB-1RU-2-1	-20°C to +55°C
miniHUB-1RU-2-1/E	-40°C to +65°C

\*) Rated temperature for the complete miniHUB.

### Absolute Maximum Ratings

Absolute maximum ratings are those values beyond which functional performance is not intended, device reliability is not implied, and damage to the device may occur.

Parameter	Minimum	Maximum	Unit
Storage temperature (non-operating)	-40	+85	°C
Relative Humidity (non-condensing)	5	95	%

### Frame Specifications

Parameter	
Dimensions of frame	145 x 44 x 255 mm (19", 1RU)
Door release mechanism	Push to release and push to close
Door removal	Yes, hinged for normal use
Card Slots - Active	2
Passive Optical Slots	1 (CWDM-8, must be ordered with frame)
Expansion Slots	0
DC Power input range	11V to 29V DC
Connector type	DC-Jack 5.5/2.1mm
Number of power connectors	2
Mixed supplies allowed	Yes, with diode split and no load sharing between supplies. Inputs can have different voltage levels.

### Power Supply

Parameter	
Model no.	10653
AC input	100 – 240V AC, 1.5A, 50-60Hz
Output voltage	24V DC
DC output power	60W
Input connector	IEC 60320 C14
Power LED indicator	Yes
Dimensions	110 x 62 x 32 mm (L/W/H)
MTBF	100.000 hours
Rack mount	With 10982 POWER TRAY 1RU 19"

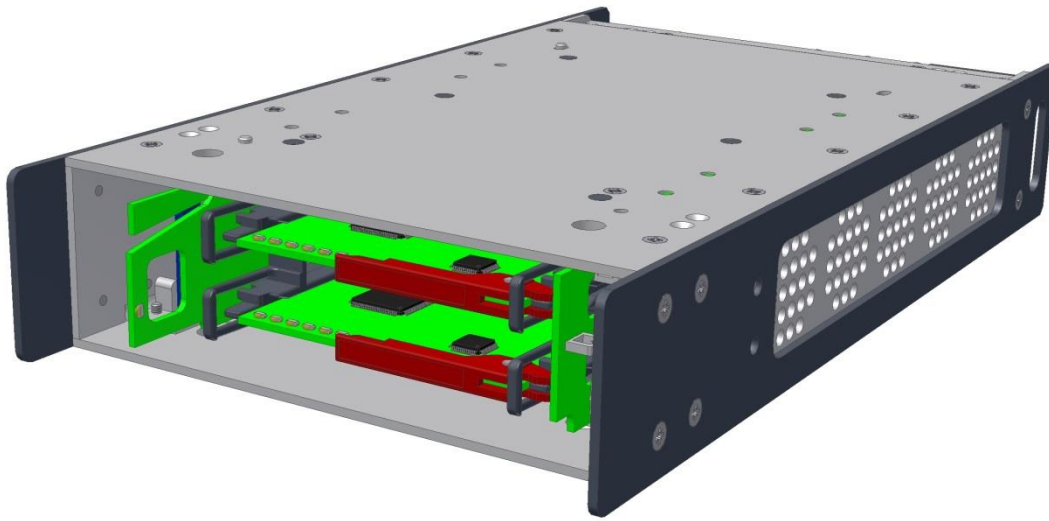
### Frame Control

Parameter	
Model no.	RCONmini MkII
Connector type	RJ45
Interface	Ethernet 100Mbit/s
Control language	WEB with html
SNMP	Yes

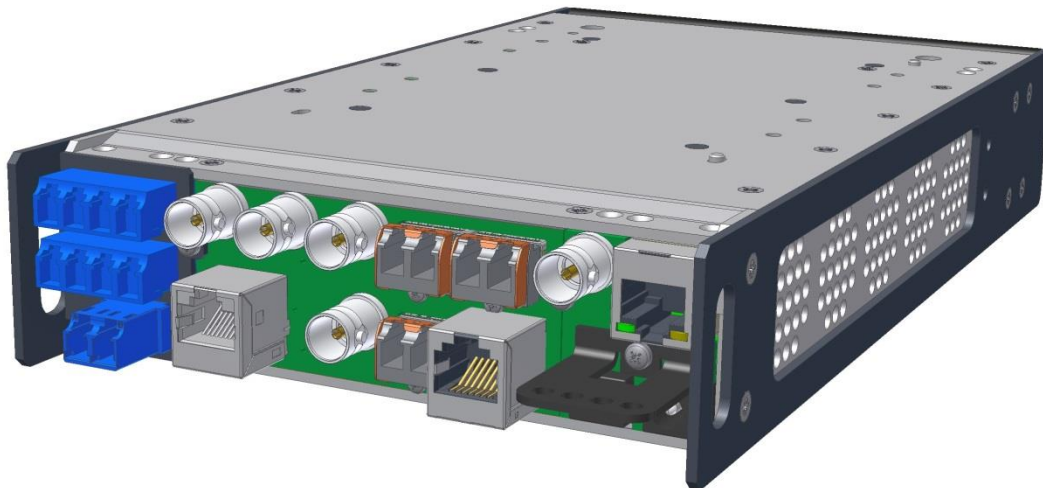
### Cooling

Parameter	
Fans	3 x processor controlled
Size	30 x 30 x 10 mm (W/H/D)
Control	Temperature sense with speed control

Front view



Rear view



Norwia AS  
Kilgata 12  
3217 Sandefjord  
Norway

Contact:  
phone: +47 33 45 20 90  
e-mail: [info@norwia.no](mailto:info@norwia.no)  
web: [norwia.com](http://norwia.com)

